



# SANTA FE IMPACT 155

NEEDLESS TO SAY, OUR **IMPACT SERIES** MAKES QUITE AN IMPACT WHEN IT COMES TO KEEPING YOUR HOME COMFORTABLE. THESE LARGE CAPACITY DEHUMIDIFIERS ARE TOUGH, POWERFUL AND THE MOST ENERGY EFFICIENT.


## MODEL 4031470



### PERFORMANCE

Water Removal	@ 80°F and 60%RH	@ 70°F and 60%RH
	155 Pints / 19.375 Gallons	123 Pints / 15.375 Gallons
Efficiency	7.3 Pints/kWh	7.2 Pints/kWh
Energy Factor	3.4 L/kWh	3.4 L/kWh
Blower	391 CFM @ 0.0" WG	
Operating Temperature	49°F Min., 95°F Max.	
Crawl Space Sizing	3,600-4,400 Sq. Ft. / 18,000-22,000 Cu. Ft.	
Basement Sizing	3,600-4,000 Sq. Ft. / 36,000-40,000 Cu. Ft.	

### ELECTRICAL

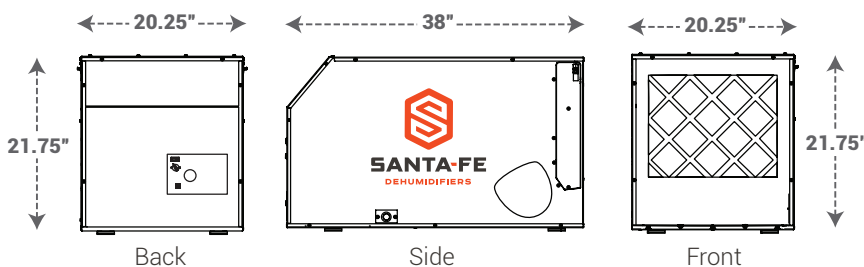
Power	920 watts @ 80°F and 60% RH	
Supply Voltage	115 volt – 1 phase – 60 Hz	
Current Draw	8.0 amps	
Power Cord	9', 115 VAC, Ground	 Plug Type B (USA, MEX, CAN, JPN)

### SPECIFICATIONS

Drain Connection	3/4" Threaded Female NPT
Drain Hose	8' Direct Gravity Drain Hose (5/8" ID x 7/8" OD)
Refrigerant	R410A, 2 lbs. 1 oz.
Unit Dimensions	20.25"W x 21.75"H x 38"D
Unit Weight	140 lbs.

### SHIPPING

Shipping Dimensions	25"W x 28"H x 42"D
Shipping Weight	159 lbs.
Pallet Quantity	1 per pallet
UPC Number	N/A
Shipping Options	UPS and LTL



Specifications are subject to change without notice. Water removal is based on pints / gallons per day. Crawl space sizing based on 5 foot ceiling height. Basement sizing based on 10 foot ceiling height.

### FEATURES

- + Dual exhaust outlets allow for air distribution to multiple locations
- + Horizontal solution is great for larger basement or crawl space applications
- + Engineered for low temperature operation and the air flow issues that crawl spaces and basements present
- + Ducting options for divided spaces
- + Auto restart allows the dehumidifier to automatically restart after a power outage



**SANTA-FE**™  
DEHUMIDIFIERS



**BUILT TO LAST. BUILT TO PERFORM.**

**FILTRATION**



**MERV-13 FILTER**

- + Designed to trap particles down to 0.3 microns
- + 90% ASHRAE Dust Spot
- + 16" x 20" x 2"

**INSTALLATION**



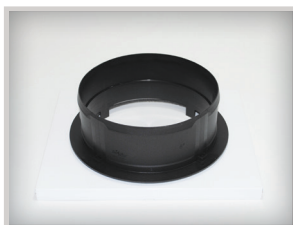
**HANG KIT**

- + One person set up
- + Minimal parts
- + Ideal for tight spaces or spaces prone to flooding and standing water



**PUMP KIT**

- + For use in spaces where gravity drain is not possible
- + Includes 20-Foot drain hose, giving the option to run longer distances
- + Pump features a float switch that directs it to run only when needed



**DUCT KITS**

- + Ideal for spaces that require extra air flow
- + Return duct attaches to front of dehumidifier
- + Supply duct kit attaches to supply outlets on the sides of dehumidifier and includes two outlet collars

**REPLACEMENT PARTS**

4026221	Leveling Foot	4035871	Compressor Overload
4031085	Condensor Coil	4032196	Impeller
4031086-05	Evaporator Coil	4025560	Fan Switch
4025741	Defrost Thermostat	4035087	Humidistat
4029510	Filter/Drier	4035235-02	Blower Capacitor
4035851	Compressor	4033032-03	Comp. Capacitor

**PART NO. ITEM**

4039391	MERV-13 Filter
4037733	MERV-13 Filter, 4-Pack
4037734	MERV-13 Filter, 12-Pack

**PART NO. ITEM**

4036685	Hang Kit
---------	----------

**PART NO. ITEM**

4028614	Pump Kit
---------	----------

**PART NO. ITEM**

4028607	Duct Kit, Supply Only
4028610	Duct Kit, Return Only
4026969	10" Flex Duct 25'
4022126	10" Flex Insulated Duct 25'
4024750	12" Flex Duct 25'
4028366	12" Flex Insulated Duct 25'

The Santa Fe team is available Monday - Friday, 8 am - 5 pm CT.

**We want to hear from you, so don't hesitate to reach out.**

Need help with a warranty claim? Contact us at 800-533-7533.

Contact Customer Service at [orders@thermastor.com](mailto:orders@thermastor.com).